

Terms & Conditions

Returns

Returns are not accepted without prior authorization. The customer is responsible for return freight costs. Returns will be credited when received goods have been inspected. Returns must be in new condition and must be shipped in their original cartons with packing materials. Please call 847.291.3900 for authorization.

Cancellation

A full refund will be given if the order is cancelled within 48 hours of ordering. Cancelled orders after 48 hours from order date and prior to shipment result in a 30% restocking fee.

Warranty

Our products carry a 30 day warranty from product defect. Warranty is void if damage is caused by misuse, misapplication, or if the product is modified. We reserve the right to repair, refund or replace an item.

Liability

Under no circumstances, shall 3branch or its affiliates, employees, directors, officers, vendors or suppliers be liable for any direct or indirect losses, damages or injuries arising out of or in connection with the use or misuse of our products.

For questions, please call 877.899.9902

start here!

discoverytm activity table system assembly instructions & hardware

Thank you for purchasing the DiscoveryTM activity table system. These instructions will show you how to properly assemble your product. Please read instructions and follow them thoroughly and carefully.

For questions or comments, please call 877.899.9902

discovery™ activity table system

assembly instructions

Assembly of this product comes down to simple nuts and bolts. The following directions will get you started. Whether assembling a single table or a large configuration, these basic steps will provide everything you need to assemble your product.

discovery™ hardware & tool items

n1 nut



b1 bolt



drawer key



m4
allen key



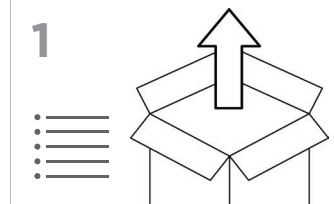
5/8 flat
wrench



SAFETY WARNING

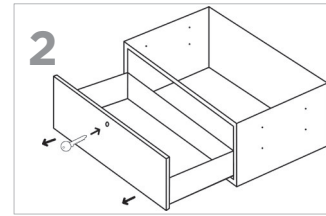
Do not attempt to assemble the table system alone. Use two people when moving and or attaching components. Components are heavy. Personal injury or product damage can occur if precautions are not taken! Be smart, be safe.

1



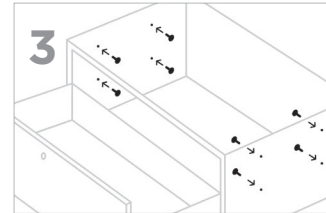
check your packing list & unpack

1. Packing list is attached to outside of box. Ensure you have all Discovery™ components.
2. Move all packages to intended area for set-up.
3. Unpack Discovery™ components. Place the table in desired location.



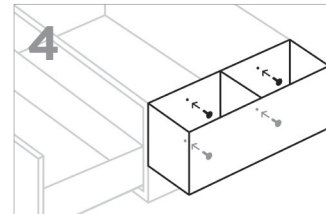
prepare components for assembly

1. For all tables and benches, unlock drawer using a **drawer key** supplied in hardware bag.
2. Slowly slide drawer open, ensuring the unit doesn't tip.
3. Locate the holes on the sides of the unit.



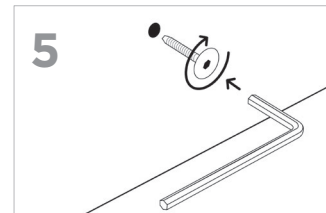
insert n1 nut into tables & benches

1. Insert **n1 nut** in each open hole as shown in **image 3**. Repeat this step as needed for all tables and benches.
2. Once all **n1 nuts** are inserted, you are ready to attach additional components.



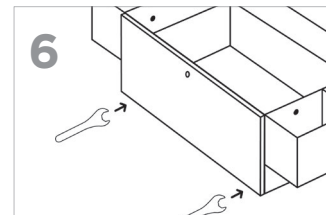
attach components with b1 bolts

1. With two people, hold components together so that all holes align. While holding components in position, insert **b1 bolt** and "start" each screw by hand.
2. Make sure all **b1 bolts** are snug before releasing weight of attached component.



hand tighten bolts

1. Use the **m4 allen key** and turn clockwise to hand tighten each bolt snug.
2. Repeat step 3 - 5 as needed to complete assembly of all components. When complete, add table top and cushions if applicable.



adjust table or bench levelers

1. Use **5/8 flat wrench** to adjust level of table or bench.
2. Insert wrench under table or bench at the feet.
3. Ensure wrench is seated properly. Turn clockwise to lower foot; counter-clockwise to raise.

NOTICE: For end panel and tower components, **n1 nuts** come embedded from the factory. Use **b1 bolts** accordingly to attach these components.