

kurve computer table finishes

drum base finishes

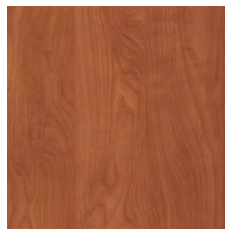
High-performance laminate options. Additional colors/patterns available.



kensington maple



palisades oak



wild cherry



natural walnut



black



astro strandz



beigewood



atlantis



ocean



amarena



vibrant green



fresh cut



clementine



cassis

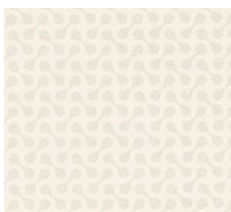


spectrum red

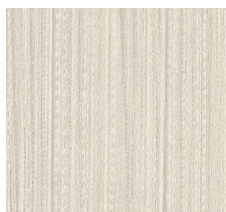
top / surface finishes

High-performance laminate, wood, solid surface, or stone.

High-performance laminate with PVC edge.



dogbone white



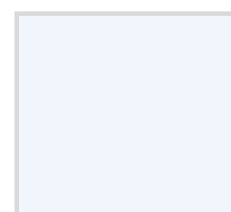
white twill



crisp linen



platinum



white

**Additional colors, patterns & wood-grain laminates available.

top / surface finishes continued

Solid Surface



whisper white



powder white



iron falls



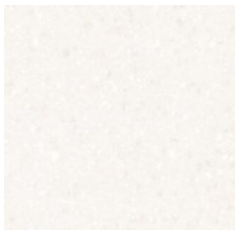
peace grey



clouded

**Additional colors / patterns available.

Stone



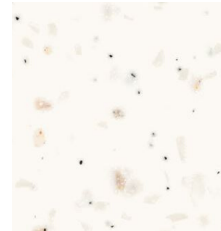
antarctica



snow drift



cloud white



tundra



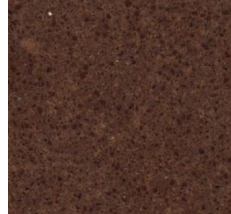
nougat



ocean foam



fieldstone



saddle brown



portoro

**Additional colors / patterns available.

privacy screen finishes

Frosted or colored acrylic, clear or colored glass.