

# kurve computer table finishes

## surface top and/or curved drum base finishes

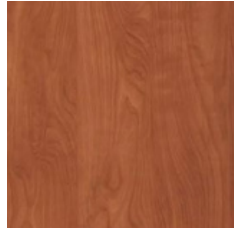
A variety of high pressure laminate wood grains and color options from WilsonArt, Pionite, Formica and Nevamar are available. Edge in complimentary or brushed stainless PVC. Inspirations below:



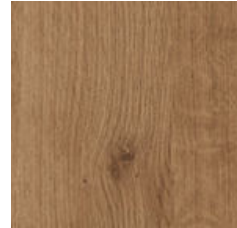
Wilsonart  
kensington maple



Wilsonart  
palisades oak



Wilsonart  
wild cherry



Formica  
planked urban oak



Wilsonart  
monticello maple



Formica  
black



Wilsonart  
fashion grey



Formica  
marine blue



Wilsonart  
port



Formica  
white



Formica  
vibrant green



Wilsonart  
flax linen



Formica  
white twill



Formica  
white drops



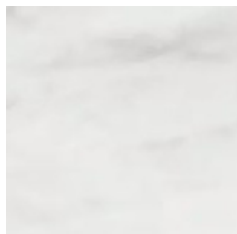
Wilsonart  
crisp linen

## additional surface top finish option

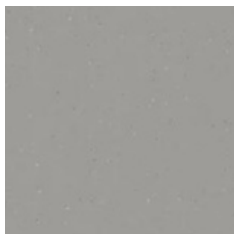
Solid surface color options from WilsonArt and Corian. Additional colors available.



Corian  
antarctica



Wilsonart  
whisper white



Wilsonart  
peace grey



Wilsonart  
iron falls



Wilsonart  
night stars

## additional surface and curved drum base finish option

Wood veneer in different varieties and finishes.

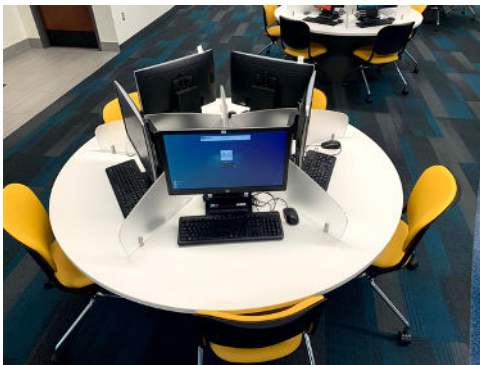
## base access door

Hinged 10"X10" base access door allows for easy set-up, power and data access, and clean wire management.



## included

- 4 grommets
- 2 plug strips



## optional accessories

3/8" thick acrylic privacy divider panels between stations - 12" high

